

# Industrial

POLY-FLO DOUBLE  
CONTAINMENT  
PIPING SYSTEM

A blue circular callout containing the text 'DOUBLE SAFETY!' in white, bold, uppercase letters.

**DOUBLE  
SAFETY!**



# Industrial

## PIPING SYSTEMS FOR INDUSTRIAL APPLICATIONS



## Competence in Plastics

AGRU Kunststofftechnik GmbH is a family-owned, high performance enterprise, headquartered in Austria with worldwide activities in production and sales of high-quality thermoplastic polymer products. The product group INDUSTRIAL PIPING SYSTEMS offers a wide range of pipes, fittings, valves and special components for the transport of aggressive media. In order to cover the various operating conditions in industrial applications, a multitude of materials such as PE, PP, PVDF and ECTFE are offered. Beside the variety of piping materials, a wide choice of piping products enables the construction of pipelines in a wide range of dimensions and flow rates. Especially for the transport of aggressive and acidic media, the excellent properties of plastic piping systems ensure high durability for many years and offer the user a sustainable solution.

The installation of INDUSTRIAL PIPING SYSTEMS can be performed by means of established welding technologies such as heating element butt-, heating element socket-, infrared- and electrofusion welding. Accessories facilitate the assembling and welding machines complete the large supply programme of AGRU.

## Advantages

- Uniform structure for all dimensions
- Easy handling at expansion and contraction
- Full pressure resistance
- No spacers required
- Secure and fast installation
- Cost savings compared to pre-fabricated systems
- Price advantage because of innovative production method
- The pipes and fittings are manufactured in one production process (injection molded, extruded)
- No prefabrication of pipes and fittings required
- Small space requirement of the double containment-piping system
- Low weight because of small space room (the small space room is possible because of the unique production method)
- „Directional drilling“ is possible



## Quality

AGRU operates a quality management system according to ISO 9001:2008. AGRU products comply with the requirements of international standards. Continuous third party inspections assure the high quality standard.



Österreichisches Normungsinstitut  
Austrian Standards Institute



## Supply Range:

### SUPPLY RANGE PIPES 5M



#### Material

PPR/PPR

PE 100-RC/PE 100-RC

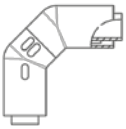
#### Dimensions

DIM 50/32 – SDR17/11

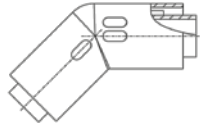
DIM 90/63 – SDR17/11

DIM 160/110 – SDR17/11

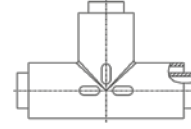
### SUPPLY RANGE FITTINGS



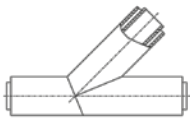
**Elbow 90°**  
from 2 Elbows 45°



**Elbow 45°**  
injection moulded



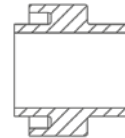
**Tee**  
injection moulded



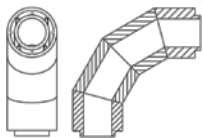
**Lateral Tee**  
segmented



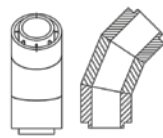
**End Cap**  
machined



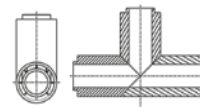
**Dog Bone**  
end Termination



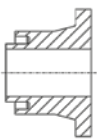
**Elbow 90°**  
from 4 segments



**Elbow 45°**  
from 3 segments

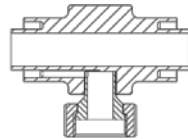


**Tee**  
segmented

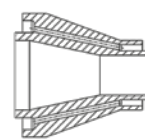


**Stub Flange**

- without flow through
- with flow through
- with flow through + O ring



**Measuring Fitting**  
leakage control



**Reducer**  
concentric

Other fittings are available on customer requests.



**OIL AND GAS**

Fracking,  
Petrochemical  
Exploration,  
Flow-Lines



**INDUSTRY**

Chemical Industry,  
Steel Galvanisation,  
Automotive

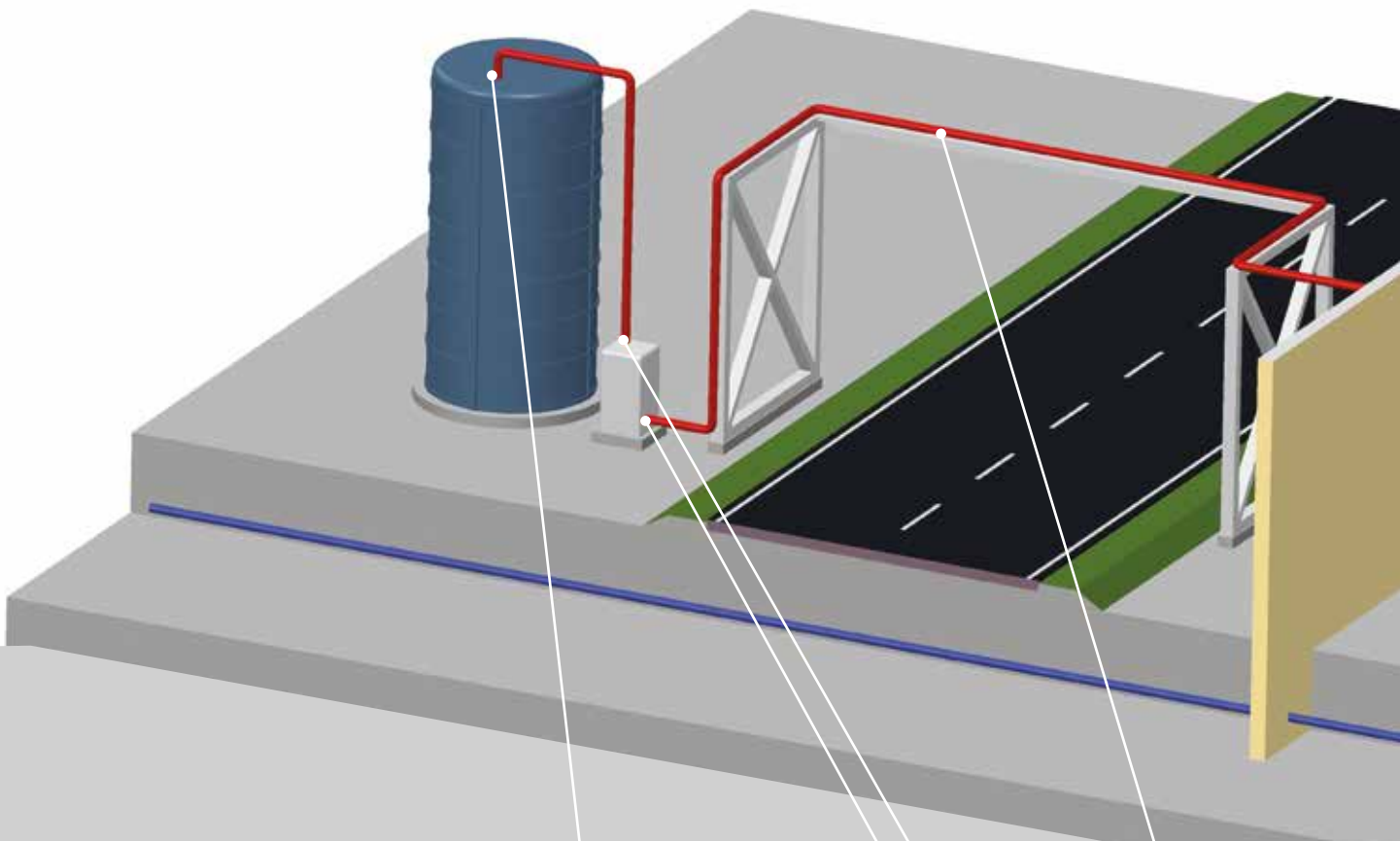


**MINING**



**INFRASTRUCTURE**

Airport,  
Power plants  
(Waste drain)



**TYPICAL  
APPLICATIONS  
FOR  
POLY-FLO  
PIPING  
SYSTEMS**



**DOG BONE**

End Termination  
Transition for double  
to single wall  
piping systems



**STUB-FLANGE**

For connections  
where welding is not  
possible or piping  
system must be  
dismountable



**POLY-FLO PIPE**

PPR grey and  
PE 100-RC black,  
suitable for above  
and underground  
installation



### FOOD AND BEVERAGE

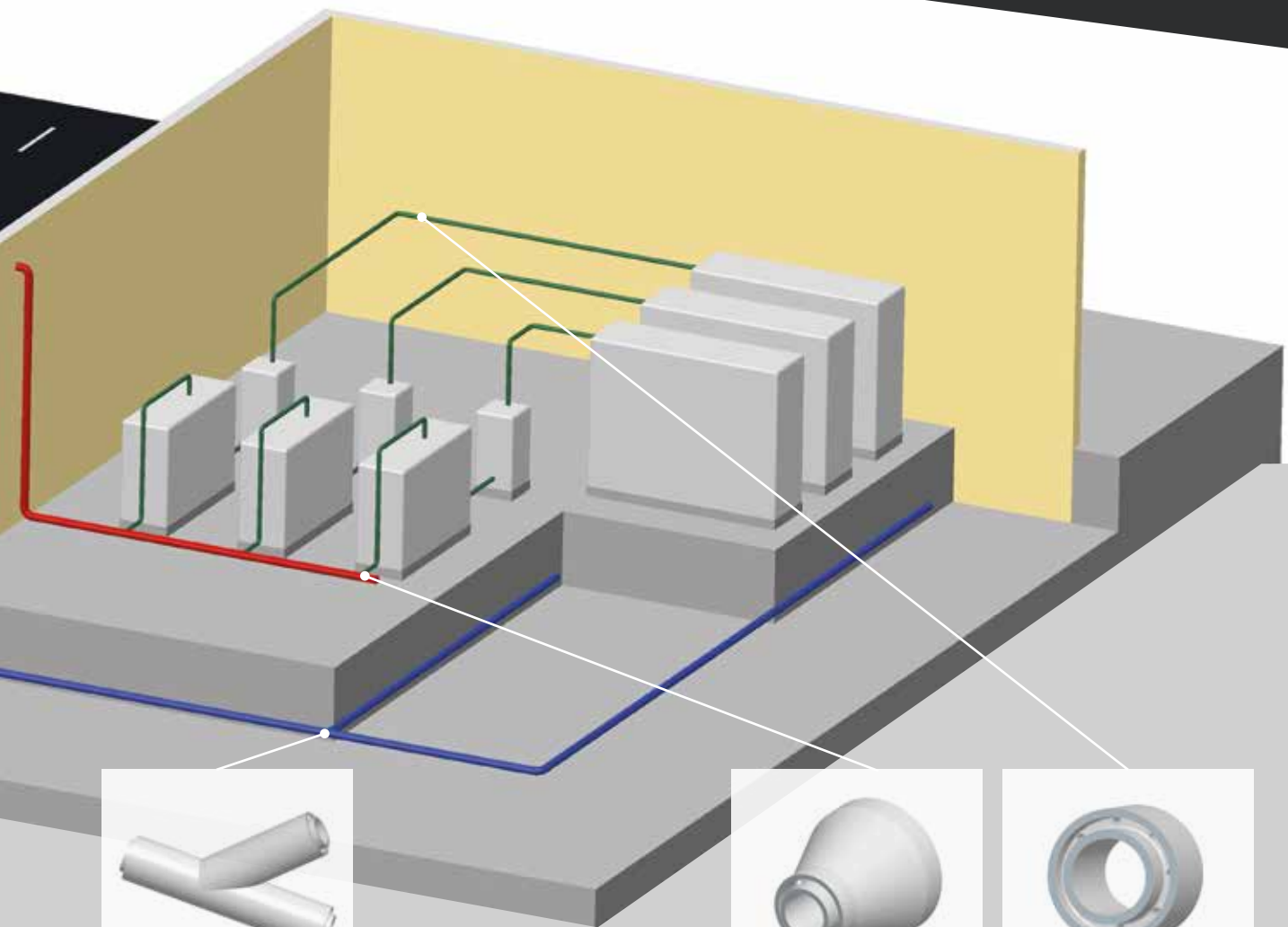
Microelectronic,  
Life-Science Industry,  
Laboratories,  
Waste drain pipe,  
Chemical process  
piping



### WATER AND WASTE WATER TREATMENT

Chemical feed lines,  
Chlorination pipes

# APPLICATION AREAS FOR POLY-FLO PIPING SYSTEMS



### LATERAL TEE

Specially for  
drainage applications  
with perfect flow



### REDUCER

Machined for  
transition for large  
to small diameter



### DOG BONE

Fixing of the piping  
system for higher  
temperature  
differences



## Piping system with double safety

The AGRU double containment pipes have been used very successfully in a wide range of applications since many years. They fulfil today's high requirements in the field of chemical process engineering. Our new Poly-Flo system is an enlargement of our double-containment piping system which has proven its worth over years. For leak detection in the double containment piping, different leak detection methods are offered and they are installed in the space between inner and outer pipe. The simultaneous welding (heating element butt welding method) is the most used connection type for piping components and ensures an easy and cost-effective installation. Beside this welding method also other connection technologies are available in the supply range from AGRU.

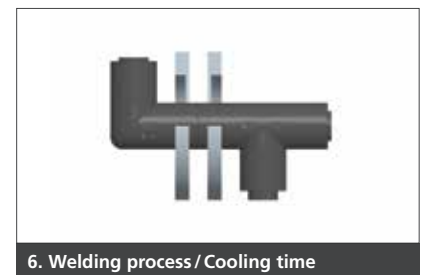
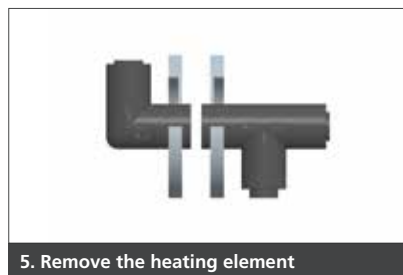
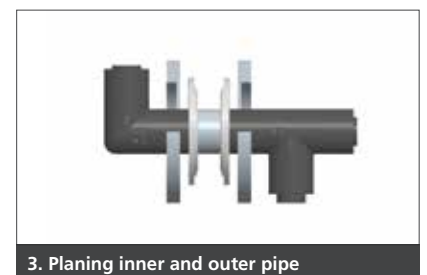
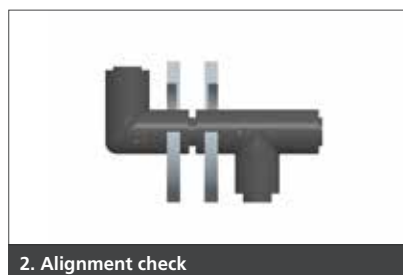
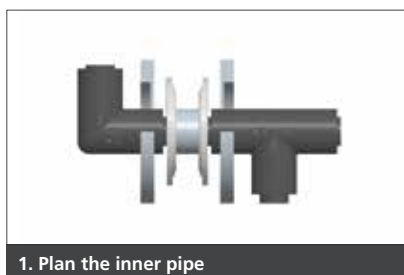
AGRU double containment piping systems ensure a system which is perfectly designed and adapted for the application (high pressure resistance of the media pipe, materials which are resistant to the transported media). Furthermore, space-saving options with reduced space for the leak detection are available.



## Poly-Flo welding method

### Simultaneous welding

The simultaneous welding is used successfully for the AGRU double containment piping systems since many years. This welding method is also applicable for our new Poly-Flo system. The main advantages of this welding method are the fast installation time and the possibility of using standard butt welding machines.





Y21001020915HS

Your distributor:



Agruquero Thermoplastics, S.L  
Pol. Ind. El Cascajal - C/ Gaviotas, 1  
28320 - Pinto (Madrid - Spain)  
T. +34 91 692 71 60  
info@agruquero.com  
www.agruquero.com

Subject to errors of typesetting, misprints and modifications.  
Illustrations are generic and for reference only.

