

Induktofix system

CONCRETE PROTECTION

Induktofix system

CONCRETE PROTECTION



The Plastics Experts.

AGRU Kunststofftechnik GmbH is a family-owned, high performance company headquartered in Austria with worldwide activities in production and sales of high-quality thermoplastic products.

Our product group CONCRETE PROTECTION offers a complete and top-quality range of concrete protective liners made of PE, PP, PVDF and ECTFE. The main focus is the protection of concrete structures from aggressive and abrasive media to increase the lifetime of the infrastructure.

The HYDRO^{CLICK} system provides a fast and safe installation for new constructions as well as renovations (e.g. water storage tanks).



Induktofix system

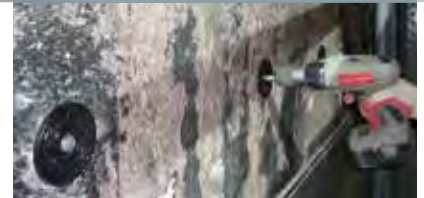
The AGRU Induktofix system is developed for the mechanically fixing of thermoplastic lining systems onto concrete structures without penetration. The AGRU Induktofix system is compatible with the AGRU PE-HD Ultra Grip concrete protective liners, the PE 80 HYDRO^{CLICK} system and the AGRU smooth liners.

System with benefits

The Induktofix welding discs can be mechanically fixed onto the concrete structure in variable or raster pattern. In that case it is possible to evade existing steel reinforcement. Furthermore the induction welding between the Induktofix welding discs and the lining system avoids penetrations of the lining system compared to other methods. Additional assembling of cover patches in order to seal penetrations by welding is not required when using the Induktofix system.



Step by Step



Step 1

For the installation of the lining system the Induktofix welding discs have to be mechanically fixed onto the existing concrete structure. Therefore no extensive preparation of the concrete surface is required.



Step 2

Removement of anchor studs by stud cutter at the fixation area.



Step 3

Positioning of the concrete protective liner and the induction welding machine.



Step 4

Welding of the Induktofix welding disc.

Advantages of the Induktofix systems

- Mechanical fixing of the lining system without penetration
- Reduction of welding work compared to traditional assembling systems
- Induktofix welding discs can be placed variable or in raster pattern
- Annular space between the CPL and the existing concrete structure does not need to be filled with additional concrete (similar to the HYDRO^{CLICK} system)*
- Reduction of installation costs

Application area

The main application of the Induktofix system is the renovation of existing concrete structures. This system can be used for temporary fixation of AGRU lining systems, either for tunnel constructions or for relining roof areas with concrete protective liner.

- Storage tanks
- Basins
- Tunnels
- Ceiling lining



*...Depends on pressure and temperature. Therefore please get in contact with the technical department from AGRU Austria.



The Plastics Experts.

agru Kunststofftechnik Gesellschaft m.b.H.
Ing.-Pesendorfer-Strasse 31
4540 Bad Hall, Austria

T. +43 7258 7900
F. +43 7258 790 - 2850
office@agru.at

Your distributor



OFFICE AND CENTRAL WAREHOUSE

Pol. Ind. El Cascajal. C/ Gaviotas, 1, 28320, Pinto, Madrid.
comercial@grupoquero.com www.agruquero.com
T: +34 91 692 71 60 F: +34 91 692 60 57



www.agru.at